

AEC POLYMERS[®]

Stronger, We bond !



TRANSPORTS

CAR INDUSTRY | AERONAUTIC | RAILWAY

FIRM PRESENTATION



With the ambition of becoming the structural bonding leader and rewarded with the research department in 2003 and 2009 by an innovation award, AECpolymers® takes today the challenge up. Located in Bordeaux (France), AECpolymers® offers a wide range of products which ensures to suit to all industrial assembly applications. Our efficient products and their exceptional performances are recognized all over the world.

***With us
you will bond
stronger !!***

PERFORMANCE



Thanks to its experts team, AECpolymers® designs high performance products which could be applied in various fields from transports to composites. They bond on all cleaned and dry-cleaned supports and they resist to all weathering events.

PROFITABILITY



AECpolymers® technology is perfect to replace classical assembly solutions as fasteners or welding, and ensure you a considerable amount of times and a significant increase of your productivity.

EFFICIENCY



Endowed with an experts' laboratory and with a reactive after-sales service department, AECpolymers® guarantees you a perfect adaptation to your needs and an optimum listening in order to always go with you straight to the excellence.

ECOLOGY



Concerned by ecology, AECpolymers® designs its products in considering the environment and the users. Indeed, thanks to its innovative technologies without volatile organic compounds emissions, solvents or dangerous materials, its products are safe and easy to use.

OUR TECHNOLOGY

Today, it's time to bank on sustainable high technology products so as to obtain maximum advantages. Our systems meet this necessity thanks to their specific formula.

In continuous innovation, AECpolymers® has created two ranges with higher capacities :

Our MSpolymer®, from the **BLACK MAMBA®** range, are single component adhesives, solvent free and smell which allow bonding and jointing. Their adhesive performance on all materials, dry-cleaned thanks to our T700, their flexibility and their resistance to all weathering events make them ideal substitutes to silicones and PU.

The **SAF®** range (Strenghts Are Flex) is made up of structural high performance adhesives without primary and surface preparation. The exceptional qualities of this range allow a structural bonding on wide surfaces, in mass production, and an incomparable resistance to the expansion and vibrations.

Our products are made without solvent and are safe for the user.

OUR ADVANTAGES

- Taylor made products
- Quick and easy to use
- Durability
- Solvent free
- Aesthetic & resistant

OUR APPLICATION FIELDS

More polyvalent, our products are suited to all materials in various fields. Our experts' team target the appropriate choice according to your needs.

Our expertises are :

- Construction and design
- The composites
- Transports
- Shipbuilding industry
- Sign industry

ASSEMBLY SOLUTIONS



| YOUR APPLICATION | WINDSCREEN | | | INSERTS | STIFFENERS | | TOPS & SEATS | | STRUCTURE BONDING | | FLOOR BONDING | | |
|------------------|---|-------------|------|-----------------------------|----------------------------------|----------------------|-----------------|-------------------|--|----------|---|-------------|---------------|
| YOUR SUBSTRATES | GLASS / ALUMINIUM | GLASS / FRP | PMMA | STAINLESS STEEL / COMPOSITE | STEEL / COMPOSITE | | STEEL / STEEL | STEEL / COMPOSITE | ALUMINIUM / STEEL | | STEEL / COMPOSITE | STEEL / FRP | STEEL / STEEL |
| OUR SOLUTIONS | SAF® 400 MS 60 BM | | | SAF® 150 SAF® 30 | SAF® 150 SAF® 30 | SAF® 150 SAF® 400 | SAF® 30 | MS 60 BM | SAF® 30 | SAF® 150 | MS 50 BM | | |
| OUR ADVANTAGES | Large flexibility bonding, bonding with differential thermal expansion | | | Fast setting | Large lenghts structural bonding | | High resistance | | High resistance, bonding with differential thermal expansion, large lenghts structural bonding | | Large flexibility bonding, Bonding with differential thermal expansion | | |

TECHNICAL CHARACTERISTICS



| SOLUTIONS | BASE | COLOUR | VISCOSITY (mPa.s @ 25°C) | OPEN TIME (MIN) | HANDLING TIME | FULL CURE TIME | HARDNESS SHORE A-D | DENSITY | SHEAR CONSTRAINT (MPa) | ELONGATION (%) | BI COMPONENT RATIO | ACCREDITATION |
|-----------|--------------|----------------------------|-----------------------------------|-------------------------|--------------------------------------|----------------|-----------------------|---------|------------------------------|-------------------|-----------------------|---|
| SAF® 150 | METHACRYLATE | R: BEIGE D: WHITE | R: 16 000 D: 11 000 | 5: 2 15: 7 45: 20 | 5: 5 MIN 15: 15 MIN 45: 45 MIN | 24 H | 60 D | 1.00 | 16 | 150 | 1/10 | NAUTICAL & M1F1 RAILWAY |
| SAF® 30 | METHACRYLATE | R: BEIGE D: WHITE | R: 1 000 D: 11 000 | 5: 2 15: 7 45: 20 | 5: 5 MIN 15: 15 MIN 45: 45 MIN | 24 H | 75 D | 1.00 | 5 | 30 | 1/10 | NAUTICAL |
| SAF® 400 | METHACRYLATE | R: BLACK D: TRANSPARENT | R: 16 000 D: 11 000 | 5: 2 15: 7 45: 20 | 5: 5 MIN 15: 15 MIN 45: 45 MIN | 24 H | 50 A | 0.96 | 6 | 400 | 1/10 | NAUTICAL, M1F1 RAILWAY & CAR INDUSTRY |
| MS 60 BM | MS POLYMER® | BLACK, WHITE, GREY | 60 000/70 000 | 10 - 15 | 24 H | 2 MM/24 H | 60 A | 1.53 | 2 | 100 | SINGLE COMPONENT | M1F1 RAILWAY |
| P730 | POLYURETHANE | R: WHITE D: BROWN | R: 8 000/10 000 D: 3 000/4 000 | 20 - 25 | 5 H | 48 H | 40 A | 1.30 | 10 | 100 | 1/1 | NAUTICAL |

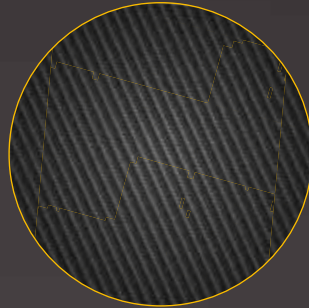


We advise you to use our surface preparator named **T700** before each application in order to guarantee an optimum bonding.



SIGN INDUSTRY

SIGNS | TOTEMS | ROADSIGNS | POS



COMPOSITE

FRP | EPOXY | CARBON | STEEL



BUILDING

FRONT WALLS | DESIGNING | SECURITY



SHIPBUILDING

SAILING BOATS | MOTOR BOATS | ACCESSORIES

AECPOLYMERS®

Zone industrielle Eyrialis
33114 Le Barp - FRANCE

T. +0033 557 261 515

F. +0033 556 367 523

contact@aecpolymers.com

www.aecpolymers.com



TRANSPORTS

CAR INDUSTRY | AERONAUTIC | RAILWAY