

# AEC POLYMERS<sup>®</sup>

Stronger, We bond !



## SIGN INDUSTRY

SIGNS | TOTEMS | ROADSIGNS | POS

# FIRM PRESENTATION



*With the ambition of becoming the structural bonding leader and rewarded with the research department in 2003 and 2009 by an innovation award, AECpolymers® takes today the challenge up. Located in Bordeaux (France), AECpolymers® offers a wide range of products which ensures to suit to all industrial assembly applications. Our efficient products and their exceptional performances are recognized all over the world.*

***With us  
you will bond  
stronger !!***

## PERFORMANCE



Thanks to its experts team, AECpolymers® designs high performance products which could be applied in various fields from transports to composites. They bond on all cleaned and dry-cleaned supports and they resist to all weathering events.

## PROFITABILITY



AECpolymers® technology is perfect to replace classical assembly solutions as fasteners or welding, and ensure you a considerable amount of times and a significant increase of your productivity.

## EFFICIENCY



Endowed with an experts' laboratory and with a reactive after-sales service department, AECpolymers® guarantees you a perfect adaptation to your needs and an optimum listening in order to always go with you straight to the excellence.

## ECOLOGY



Concerned by ecology, AECpolymers® designs its products in considering the environment and the users. Indeed, thanks to its innovative technologies without volatile organic compounds emissions, solvents or dangerous materials, its products are safe and easy to use.

# OUR TECHNOLOGY

Today, it's time to bank on sustainable high technology products so as to obtain maximum advantages. Our systems meet this necessity thanks to their specific formula.

In continuous innovation, AECpolymers® has created two ranges with higher capacities :

Our MSpolymer®, from the **BLACK MAMBA®** range, are single component adhesives, solvent free and smell which allow bonding and jointing. Their adhesive performance on all materials, dry-cleaned thanks to our T700, their flexibility and their resistance to all weathering events make them ideal substitutes to silicones and PU.

### The **SAF®** range (Strenghts Are Flex)

is made up of structural high performance adhesives without primary and surface preparation. The exceptional qualities of this range allow a structural bonding on wide surfaces, in mass production, and an incomparable resistance to the expansion and vibrations.

Our products are made without solvent and are safe for the user.

## OUR ADVANTAGES

- Taylor made products
- Quick and easy to use
- Durability
- Solvent free
- Aesthetic & resistant

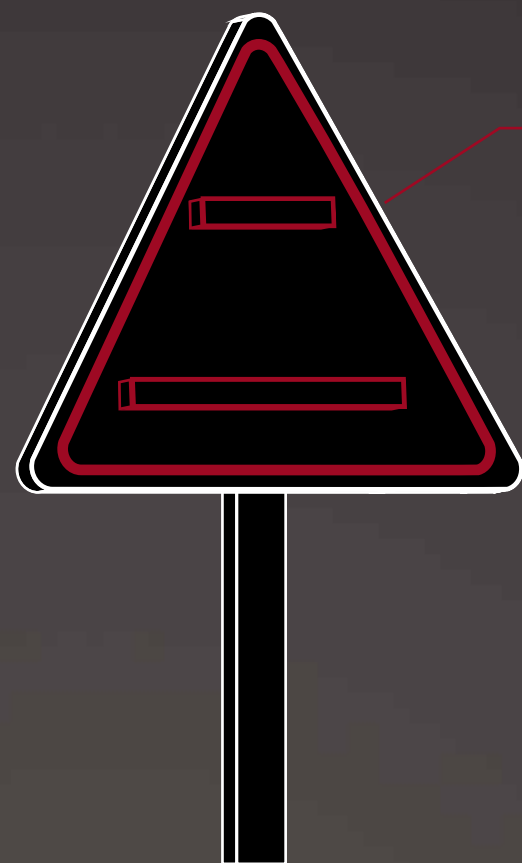
## OUR APPLICATION FIELDS

More polyvalent, our products are suited to all materials in various fields. Our experts' team target the appropriate choice according to your needs.

### Our expertises are :

- Construction and design
- The composites
- Transports
- Shipbuilding industry
- Sign industry

# ASSEMBLY SOLUTIONS

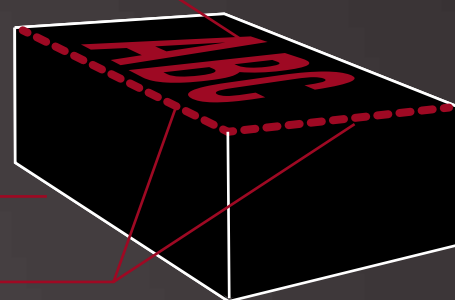


ROADSIGNS

LETTERS

BOX OR STRUCTURE

BONDING / FOLDING



STIFFENERS  
STRUCTURE BONDING



LED OR INSERTS

YOUR APPLICATION	LED OR INSERTS		STIFFENERS	STRUCTURE	ROADSIGNS	BOX OR STRUCTURE			FOLDING	LETTERS
YOUR SUBSTRATES	GLASS / PLASTIC / STEEL		STEEL / PAINT / COMPOSITE	STEEL	PAINTED STEEL	GLASS	PMMA		STEEL / PAINTED COMPOSITE	STEEL / PAINTED COMPOSITE
OUR SOLUTIONS	SAF° 400	SAF° 150	SAF° 150	SAF° 30	SAF° 150	LC 242 / 241 UV	LC 133 UV	B 102 V	SAF° 150	MS 60 BM HT
OUR ADVANTAGES	High resistance		High resistance, bonding with differential thermal expansion	Very high resistance	Paint powder cycle	Transparent, fast, high viscosity, through capillary action, high resistance			Good mechanical strength	Instant adhesion, mechanical strenght

# TECHNICAL CHARACTERISTICS

SOLUTIONS	BASE	COLOUR	VISCOSITY (mPa.s @ 25°C)	OPEN TIME (MIN)	HANDLING TIME	FULL CURE TIME	HARDNESS SHORE A-D	DENSITY	SHEAR CONSTRAINT (MPa)	ELONGATION (%)	BI COMPONENT RATIO	ACCREDITATION
SAF® 150	METHACRYLATE	R : BEIGE D : WHITE	R : 16 000 D : 11 000	5 : 2 15 : 7 45 : 20	5 : 5 MIN 15 : 15 MIN 45 : 45 MIN	24 H	60 D	1.00	16	150	1/10	NAUTICAL & M1F1 RAILWAY
SAF® 30	METHACRYLATE	R : BEIGE D : WHITE	R : 1 000 D : 11 000	5 : 2 15 : 7 45 : 20	5 : 5 MIN 15 : 15 MIN 45 : 45 MIN	24 H	75 D	1.00	25	30	1/10	NAUTICAL
SAF® 400	METHACRYLATE	R : BLACK D : TRANSPARENT	R : 16 000 D : 11 000	5 : 2 15 : 7 45 : 20	5 : 5 MIN 15 : 15 MIN 45 : 45 MIN	24 H	50 A	0.96	6	400	1/10	NAUTICAL, M1F1 RAILWAY & CAR INDUSTRY
MS 60 BM HT	MS POLYMER®	BLACK, WHITE, GREY	60 000/70 000	10 - 15	24 H	2 MM/24 H	60 A	1.53	2	50	SINGLE COMPONENT	M1F1 RAILWAY
LC 242	ACRYLATE	TRANSPARENT	3 000	N.A.	INSTANTANEOUS	5 TO 30 S	60 D	1.10	15	40	SINGLE COMPONENT	N.A.
LC 133	ACRYLATE	TRANSPARENT	3 000	N.A.	INSTANTANEOUS	5 TO 30 S	80 A	1.10	15	120	SINGLE COMPONENT	N.A.
B 102 V	METHACRYLATE	TRANSPARENT	R : 10 000/15 000 D : 10 000/15 000	3	2 H	24 H	55 D	1.00	15	20	1/1	N.A.

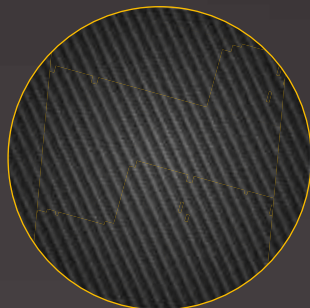
We advise you to use our surface preparator named **T700** before each application in order to guarantee an optimum bonding.





## TRANSPORTS

CAR INDUSTRY | AERONAUTIC | RAILWAY



## COMPOSITE

FRP | EPOXY | CARBON | STEEL



## BUILDING

FRONT WALLS | DESIGNING | SECURITY



## SHIPBUILDING

SAILING BOATS | MOTOR BOATS | ACCESSORIES

**AEC**POLYMERS®

Zone industrielle Eyrialis  
33114 Le Barp - FRANCE

**T.** +0033 557 261 515

**F.** +0033 556 367 523

contact@aecpolymers.com

**www.aecpolymers.com**



## SIGN INDUSTRY

SIGNS | TOTEMS | ROADSIGNS | POS